

Gauges



Gauges Advantage

Instrument set

06300-ZW5-010ZA

- Black face, white letters, yellow needle
- Includes 5 gauges: 0-7000 rpm/digital hour meter, 10-60 mph (30-95 km/h) speedometer, 10-16 voltmeter, 240-33 ohms fuel gauge, trim meter, drilling diameter 86 mm (rpm & speed) and 53 mm (volt, fuel, trim), flat lens
- Required part: 32103-ZW7-000AH



Application as from BF40 up to BF225

Instrument set

06300-ZW5-010ZB

- White face, black letters & needle
- Includes 5 gauges: 0-7000 rpm/digital hour meter, 10-60 mph (30-95 km/h) speedometer, 10-16 voltmeter, 240-33 ohms fuel gauge, trim meter, drilling diameter 86 mm (rpm & speed) and 53 mm (volt, fuel, trim), flat lens
- Required part: 32103-ZW7-000AH



Application as from BF40 up to BF225

Instrument set

06320-ZW5-00ZAE

- Black face, white letters, yellow needle
- Includes 5 gauges: 0-7000 rpm/digital hour meter, 10-60 mph (30-95 km/h) speedometer, 10-16 voltmeter, 10-180 ohms fuel gauge, trim meter, drilling diameter 86 mm (rpm & speed) and 53 mm (volt, fuel, trim), flat lens
- Required part: 32103-ZW7-000AH

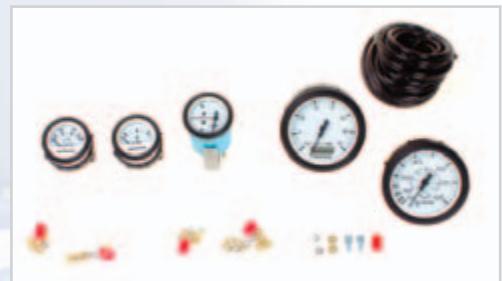


Application as from BF40 up to BF225

Instrument set

06310-ZW5-00ZBE

- White face, black letters, yellow needle
- Includes 5 gauges: 0-7000 rpm/digital hour meter, 10-60 mph (30-95 km/h) speedometer, 10-16 voltmeter, 10-180 ohms fuel gauge, trim meter, drilling diameter 86 mm (rpm & speed) and 53 mm (volt, fuel, trim), flat lens
- Required part: 32103-ZW7-000AH



Application as from BF40 up to BF225

Gauges



Gauges Advantage

Water pressure meter

37350-ZW5-000ZA

- Black face, white letters, yellow needle
- 0-30 PSI scale, including tubing and engine fitting, flat lens, drilling diameter 53 mm
- Required part: 32103-ZW7-000AH

Application as from BF20 up to BF225



Water pressure meter

37350-ZW5-000ZB

- White face, black letters & needle
- 0-30 PSI scale, including tubing and engine fitting, flat lens, drilling diameter 53 mm
- Required part: 32103-ZW7-000AH

Application as from BF20 up to BF225



Black fuel meter

37300-ZW5-000ZA

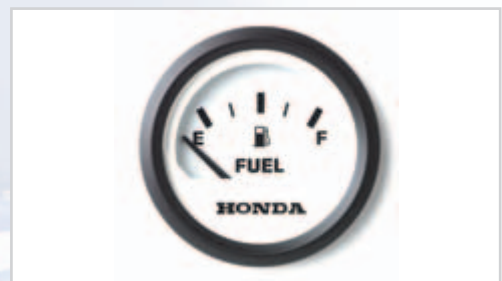
- Black fuel meter flat lens, white letters, yellow needle
- For inbuilt fuel tanks
- Drilling diameter 53 mm
- Ohms 240-33



White fuel meter

37300-ZW5-000ZB

- White fuel meter flat lens, black letters & needle
- For inbuilt fuel tanks
- Drilling diameter 53 mm
- Ohms 240-33



Gauges



Gauges Advantage

Black fuel meter

37320-ZW5-00ZAE

- Black fuel meter flat lens, white letters, yellow needle
- For inbuilt fuel tanks
- Drilling diameter 53 mm
- Ohms 10-180



White fuel meter

37310-ZW5-00ZBE

- White fuel meter flat lens, black letters & needle
- For inbuilt fuel tanks
- Drilling diameter 53 mm
- Ohms 10-180



Tacho/hourmeter

37250-ZW5-010ZA

- Black face, white letters & yellow needle
- 0-7000 rpm & digital hour meter, flat lens, drilling diameter 86 mm
- Required part: 32103-ZW7-000AH

Application as from BF20 up to BF225



Tacho/hourmeter

37250-ZW5-010ZB

- White face, black letters & needle
- 0-7000 rpm & digital hour meter, flat lens, drilling diameter 86 mm
- Required part: 32103-ZW7-000AH

Application as from BF20 up to BF225



Gauges



Gauges Advantage

Hourmeter

39700-ZW5-000ZA

- Black face
- Analogue 9999 hour meter, flat lens, drilling diameter 53 mm
- Required part: 32103-ZW7-000AH

Application as from BF20 up to BF225



Hourmeter

39700-ZW5-000ZB

- White face
- Analogue 9999 hour meter, flat lens, drilling diameter 53 mm
- Required part: 32103-ZW7-000AH

Application as from BF20 up to BF225



Speedometer

37200-ZW5-000ZA

- Black face, white letters & yellow needle
- 10-60 mph (30-95 km/h), flat lens, drilling diameter 86 mm
- Required part: 32103-ZW7-000AH

Application as from BF40 up to BF225



Speedometer

37200-ZW5-000ZB

- White face, black letters & needle
- 10-60 mph (30-95 km/h), flat lens, drilling diameter 86 mm
- Required part: 32103-ZW7-000AH

Application as from BF40 up to BF225



Gauges



Gauges Advantage

Voltmeter

37450-ZW5-000ZA

- Black face, white letters, yellow needle
- 10-16 volts indicator, flat lens, drilling diameter 53 mm
- Required part: 32103-ZW7-000AH

Application as from BF20 up to BF225



Voltmeter

37450-ZW5-000ZB

- White face, black letters & needle
- 10-16 volts indicator, flat lens, drilling diameter 53 mm
- Required part: 32103-ZW7-000AH

Application as from BF20 up to BF225

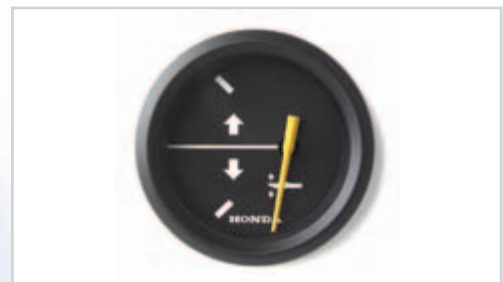


Trim meter

37260-ZW5-000ZA

- Black face, white markings, yellow needle
- Up & down indicator, flat lens, drilling diameter 53 mm
- Required part: 32103-ZW7-000AH

Application as from BF40 up to BF225



Trim meter

37260-ZW5-000ZB

- White face, black markings & needle
- Up & down indicator, flat lens, drilling diameter 53 mm
- Required part: 32103-ZW7-000AH

Application as from BF40 up to BF225

